

## Side-of-Pole Mount

### VE-SPM27A




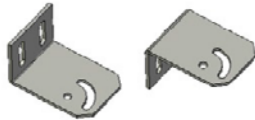
The VE-SPM27A is a simple pole mount solution with angle and width adjustments for solar panels up to 27" in combined width.

The included hose clamps support poles with a diameter from 3.5" - 6". If mounting needs to be done on a larger pole, installer can use bolts, lag bolts, U-bolts, or other secure options.



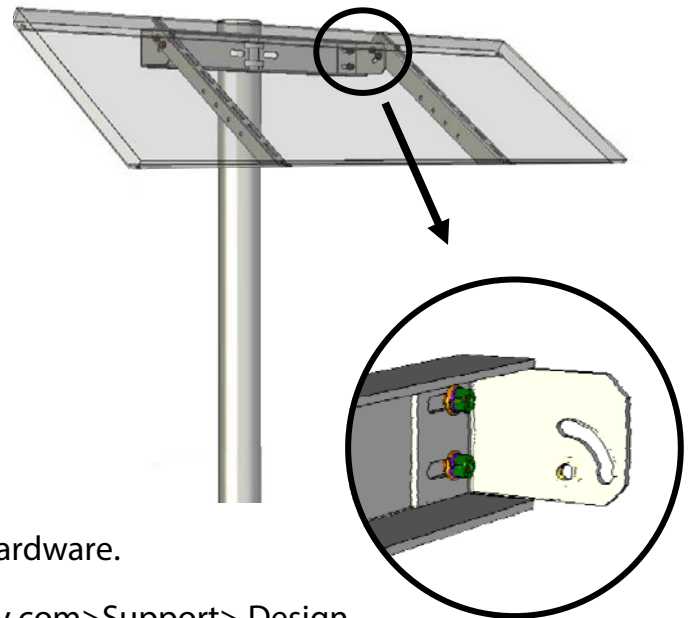
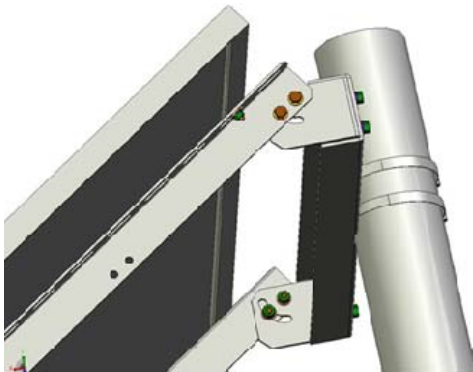
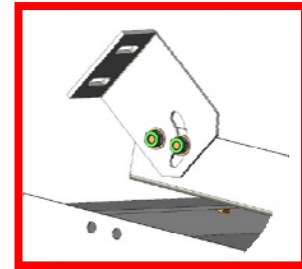
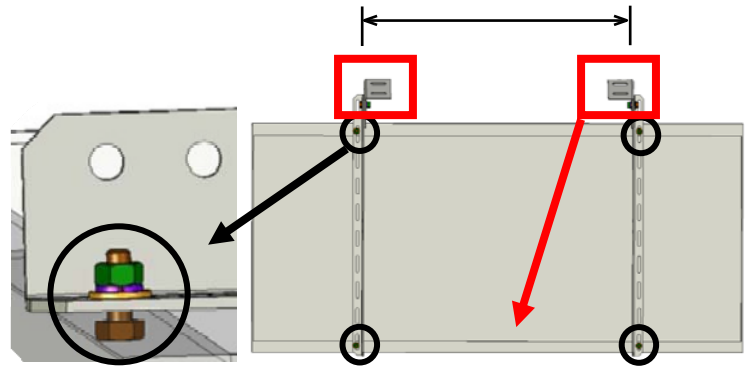
**Vorp Energy makes every effort to ensure your mounting kit is easy to install. If you need assistance at any point with your installation or have suggestions on how we can improve your experience, call Vorp Energy customer support: (208) 904-0424**

### Component List:

<p>Channel (SPM1-35) x1</p> 	<p>Hose Clamps x2</p> 
<p>Rails (SPM2-27) x2</p> 	<p>Clips left (SPM5-1) x1 Clips right (SPM5-2) x1</p> 
	<p>Hardware Included:</p> <p>-5/16 Washer (12)    -5/16 Split Lock Washer (12) -5/16 Bolt (12)     -5/16 Hex Nut (12)</p> <p><small>*You may have extra hardware depending on the panel you are mounting.</small></p>

## Assembly:

1. Mount the Solar Rails to the holes in the PV Module using a bolt, flat washer, clip, lock washer, and nut. (Bolt four points per solar panel) Max width between holes should be less than 38". If greater than 38", drilling holes into panel may be required.
2. Attach Clips to rails (bolt, flat washer, clip, lock washer, and nut)
3. Attach channel to the pole using 2 Hose clamps. (Compatible with 3.5" - 6" poles)
4. Bolt a left and right clip to the channel (image below) using flat washers with a lock washer under the nut. Then bolt the solar panel/rail assembly to the clips.



## Adjust Panel Angle:

- Loosen hardware on clips, readjust, and tighten hardware.
- To determine proper winter angle see: [vorpenergy.com](http://vorpenergy.com)>Support> Design Calculator> Solar Angle Calculator.