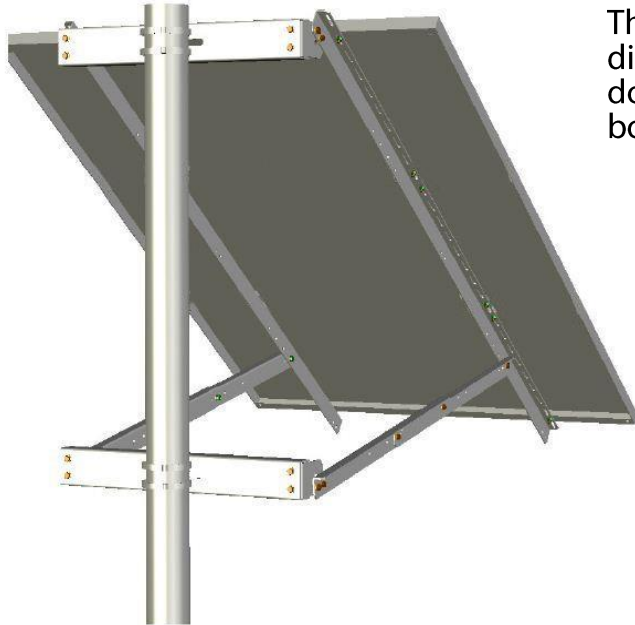


## Side-of-Pole Mount

### VE-SPM55X



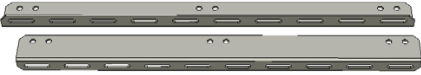
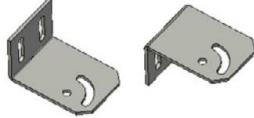



The VE-SPM55X is a simple pole mount solution with angle and width adjustments for solar panels up to 55" in combined width.

The included hose clamps support poles with a diameter from 3.5" - 6". If mounting needs to be done on a larger pole, installer can use bolts, lag bolts, U-bolts, or other secure options.

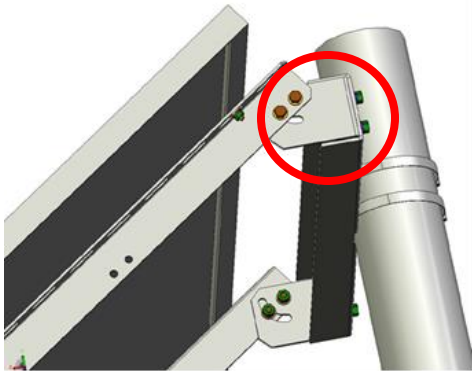
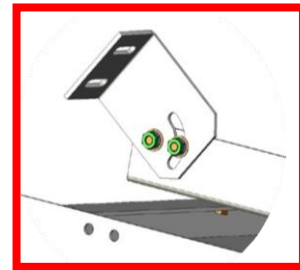
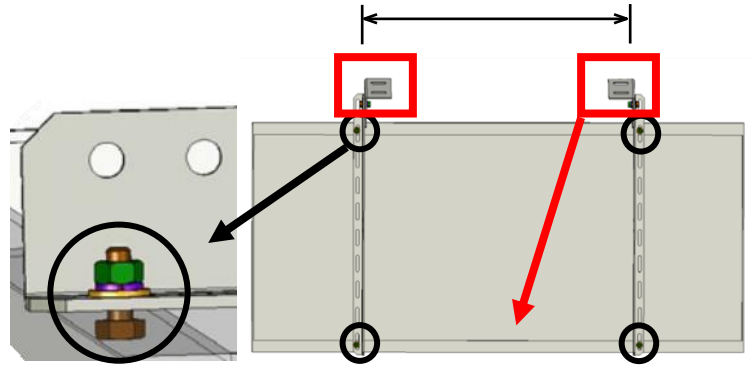
Vorp Energy makes every effort to ensure your mounting kit is easy to install. If you need assistance at any point with your installation or have suggestions on how we can improve your experience, call Vorp Energy customer support: (208) 904-0424

### Component List:

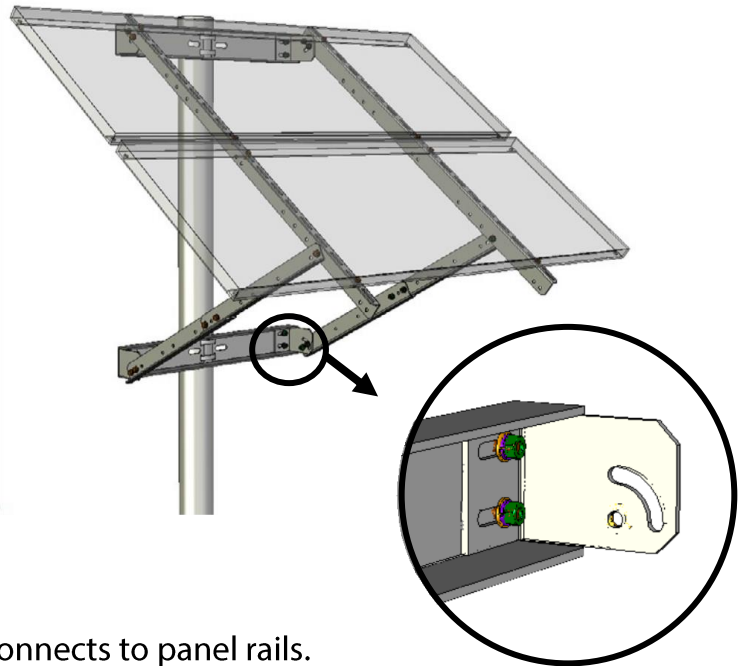
<p>Channel (SPM1-35) x2</p> 	<p>Hose Clamps x4</p> 
<p>Rails (SPM2-55) x2</p> 	<p>Clips left (SPM5-1) x2 Clips right (SPM5-2) x2</p> 
<p>Support Rails (SPM3-32) x2</p> 	<p>Hardware Included:</p> <p>-5/16 Washer (26)    -5/16 Split Lock Washer (26) -5/16 Bolt (26)      -5/16 Hex Nut (26)</p> <p><small>*You may have extra hardware depending on the panel you are mounting.</small></p>

## Assembly:

1. Mount the Solar Rails to the holes in the PV Module using a bolt, flat washer, clip, lock washer, and nut. (Bolt four points per solar panel) Max width between holes should be less than 38". If greater than 38", drilling holes into panel may be required.
2. Attach Clips to rails (bolt, flat washer, clip, lock washer, and nut)
3. Attach two channels to the pole using 4 Hose clamps. (Compatible with 3.5"- 6" poles)
4. Bolt a left and right clip to top channel (image below) using flat washers with a lock washer under the nut. Then bolt the solar panel/rail assembly to the clips.



5. Attach support rails by bolting a right and left clip to the lower bucket.



## Adjust Panel Angle:

- Move the lower bucket up or down.
- Change the hole where the support rail connects to panel rails.
- To determine proper winter angle see: [vorpenergy.com](http://vorpenergy.com)>Support> Design Calculator> Solar Angle Calculator.