

SPEC SHEET SOLAR PANEL MOUNTS



SPM-42X / SPM-55X



SPM-27



TPM-4

FEATURES

- Simple, affordable
- Mounts to a wide range of pole sizes
- 100% Stainless Steel hose clamps
- Aircraft Grade 5052 Aluminum
- Easy angle adjustment
- Integrated angle finder
- Rated for 110mph wind

DESCRIPTION

The TPM “Top of Pole Mount” and SPM “Side of Pole Mount” series of pole mounts offers a complete range of mounting options from 100w to 1200w arrays. The Aircraft Grade 5052 Aluminum frames on the SPM and Hot Dipped Galvanized structural steel of the TPM mount ensure a corrosion resistant mount for many years to come. All of our Solar mounts are rated for 110mph wind, are easy to install and are rugged enough for the harshest condions from northern Canada and Alaska to the Heat of Southern Arizona and Mexico.

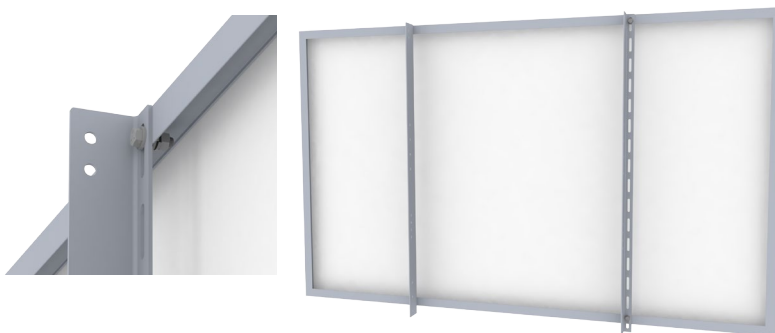
SPECS

	SPM-27	SPM-42X	SPM-55X	TPM-4
Panel Width	up to 27"	12" to 42"	12" to 55"	
Panel Watts	(1) 100w	(1) 250w or (1) 300w	(2) 100w	(4) 250w or (4) 300w
Panel Mounting Method	Edege Clip	5/16" Bolt Hardware (included)		
Pole Diameter	3.5" to 4.5" (with provided hoseclamps)			
Mount Attachment	Wall / Pole (not provided) / VorpSkid (skid sold seperately)			Concrete or VorpSkid (skid sold seperately)
Pole Included	No	No	No	Yes
Shipping Weight	8lb	14lb	15lb	340lb
Angle Adjustment Range	0° - 90°	0° - 90°	0° - 90°	15° - 50°
Wind Speed Rating	110mph	110mph	110mph	110mph

STEP 1

Mount the long Rails (SPM-A-55 or SPM-A-42) to the Solar Panel using the existing holes on the rear of the panel. Bolt 4 points per Solar Panel.

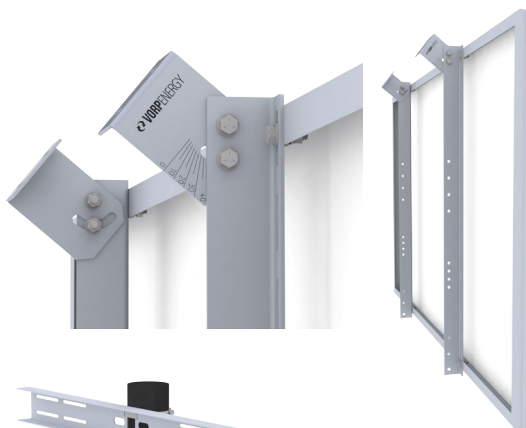
Max width between holes should be 38" (drilling may be required).



STEP 2

Attach the engraved SPM-LB-L-ENG and (1)SPM-LB-R to the SPM-A-55 or SPM-A-42 rails using the provided hardware. Set the adjustment angle using the calculator found by scanning the QR Code or at:

<http://www.vorpenergy.com/resources/calculators/>



STEP 3

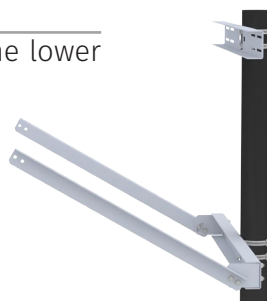
Attach the two SPM-C-35 channels to the pole using the provided hose clamps. Tighten the hose clamps of the upper SPM-C-35 at the height the top of the solar panel will be mounted. Leave the two lower hose clamps slightly loose so the lower SPM-C-35 can be adjusted later.

Attach the second pair of clips, SPM-LB-L and SPM-LB-R to the lower SPM-C-35.



STEP 4

Attach the two SPM-A-32 braces to the lower SPM-C-35



STEP 5

Attach the solar panel assembly completed in step two, to the upper SPM-C-35.

Attach the SPM-A-32 braces to the appropriate holes in the SPM-A-55 or SPM-A-42 rails. Check that the angle is correct and tighten all the bolts. To adjust the angle, loosen the appropriate bolts and hose clamps that hold the lower SPM-C-35. Lower or raise the lower SPM-C-35 and re-tighten all hose clamps and bolts.

