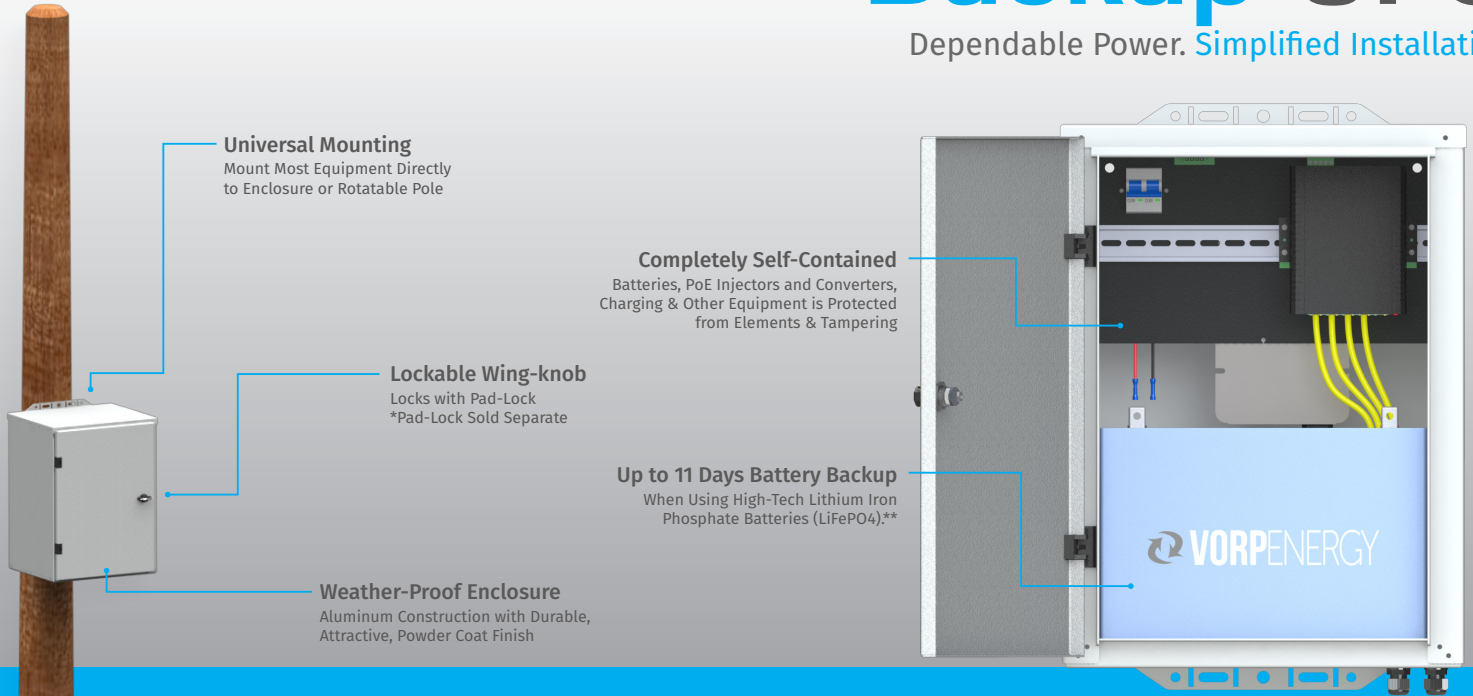


Backup-UPS

Dependable Power. Simplified Installation



Universal Mounting
Mount Most Equipment Directly to Enclosure or Rotatable Pole

Lockable Wing-knob
Locks with Pad-Lock
*Pad-Lock Sold Separate

Weather-Proof Enclosure
Aluminum Construction with Durable, Attractive, Powder Coat Finish

Completely Self-Contained
Batteries, PoE Injectors and Converters, Charging & Other Equipment is Protected from Elements & Tampering

Up to 11 Days Battery Backup
When Using High-Tech Lithium Iron Phosphate Batteries (LiFePO4)**

Uninterruptible Power Supply

For Cameras, Communications, and Lighting

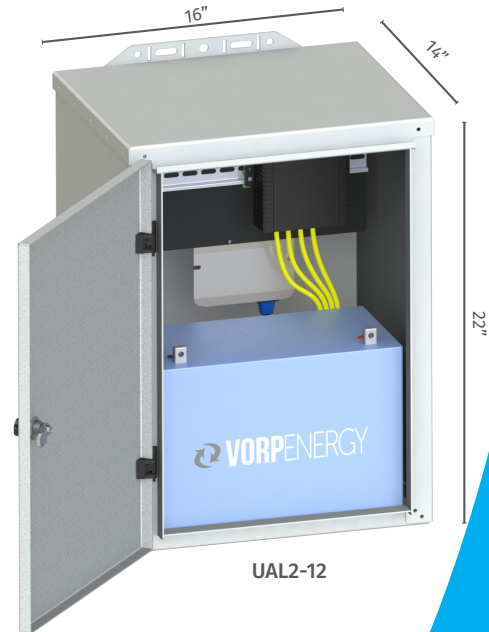
**Actual Backup Time will vary based on Load, Battery Size, & Configuration

Common Applications

- Light Poles with power controlled by a timer or photocell.
- Mission critical equipment installation.
- Other installations where grid power loss is a concern.

Quick Specs	UAL2	UAL5
Enclosure Size	H 22" x W 16" x D 14"	H 30" x W 22" x D 13"
Battery Capacity	(2) 100Ah Batteries	(4) 100Ah Batteries
100Ah Battery Size*	H 9.2" x W 12.3" x D 6.7"	
Enclosure Weight	~13lbs	~33lbs
Pole Size	4" to 6" (Recommended)	
Material	Powder Coated Aluminum	
Operating Temp.	-40°F - 140°F	

*Battery Sizes are "Typical". We cannot guarantee that 3rd party batteries will fit or function with Vorp Energy power solutions. Additional info available upon request.



UAL2-12

Grid Power Not Available?

Call our expert team today to discuss a Remote Power Solar

Kit to keep your equipment online 24/7/365.

Vorp Energy

- 📍 4774 South Hwy 191
Rexburg, ID 83440
- 📞 Phone : + (208) 904-0424
- ✉️ E-Mail : support@vorpenergy.com



This information subject to change without notice.

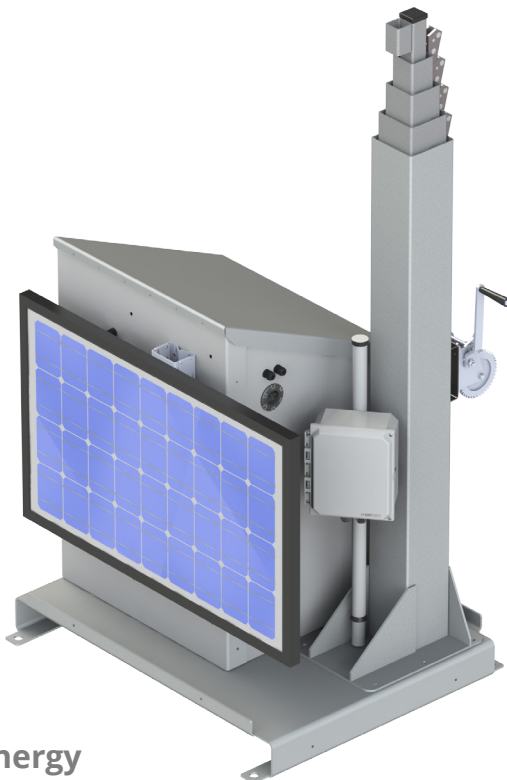


Backup-UPS

Dependable Power. Simplified Installation

Battery Charge Controller Specs

Model Number		UAL2-12/UAL5-12	UAL2-24/UAL5-24	UAL2-48/UAL5-48
Output	Boost Charge Voltage	14.4V	28.8V	57.6V
	Float Charge Voltage	13.6V	27.2V	54.4V
	Voltage Adjustment Range	13 ~ 14.7V	26 ~ 28.8V	52 ~ 58.6V
	Battery Type	Sealed Lead Acid (SLA)		
	Output Current (Typical)	24.3A	12.5A	6.25A
Input	Voltage Range	90 ~ 132VAC / 180 ~ 264VAC Selected by Switch		
	Frequency Range	47 ~ 63Hz		
	Power Factor (Typical)	>0.65 (with P type) @ 230VAC		
	AC Current (Typical)	7A/115VAC - 3.5A 230VAC		
	Inrush Current (Typical)	Cold Start 60A		
Protection	Short Circuit	O/P Built in Fuse (FS100)		
	Reverse Polarity	By Internal Fuse		
	Over Voltage	16 ~ 18V	31 ~ 35V	59 ~ 64V
		Shuts Down O/P Voltage. Re-Power On to Recover		
Safety & EMC	Safety Standards	IEC60335-2-29 CB approved by TUV(except for 48V), UL60950-1, EAC TP TC 004 approved		
	Withstand Voltage	I/P-O/P:3KVAC I/P-FG:2KVAC O/P-FG:0.5KVAC		
	Isolation Resistance	I/P-O/P, I/P-FG, O/P-FG:100M Ohms / 500VDC / 25/ 70% RH		
	EMC Emission	Compliance to EN55032 (CISPR32) Class B, EN61000-3-2,-3 (only P type),EAC TP TC 020		
	EMC Immunity	Compliance to EN61000-4-2,3,4,5,6,8,11, EN55024, light industry level, criteria A,EAC TP TC 020		



Need a Deployable Solution?

Check out our newest, most advanced system yet, the **Micro-Skid!** Built to be deployed rapidly and withstand punishing circumstances it is the **Ultimate Mobile Surveillance Unit**. Easily load 8 units or more onto a utility trailer and secure any location in a **single trip**. The best part? These units are **surprisingly affordable**, with discounted pricing for Vorp Energy Integration Partners.

MSRP Starting at

\$7100

Vorp Energy

📍 4774 South Hwy 191
Rexburg, ID 83440
📞 Phone : + (208) 904-0424
✉ E-Mail : support@vorpenergy.com

This information subject to change without notice.

 **VORPENERGY**