

21' (Extended)

6.8' (Nested)

Quick Detach Head End

Power Up to 4 Cameras and a Communications Device

High Wind Stability

Quick Deploy Guy Lines Stabilize Mast for Camera Applications in Any Conditions

3-Section Telescoping Mast

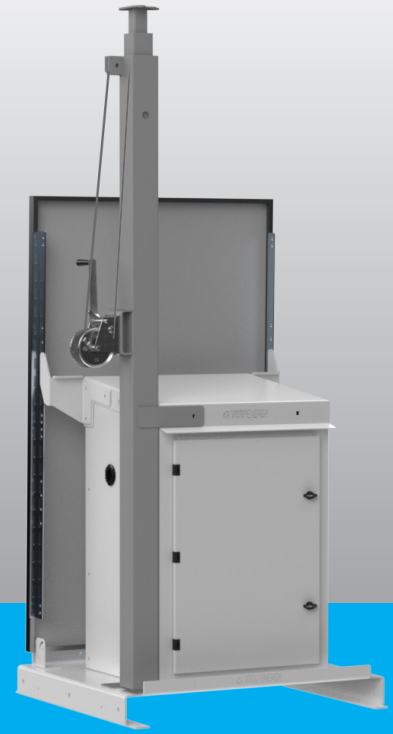
Heavy-Duty Steel Mast Sections Built for Years of Rugged Deployment

Power Cable Protection

Cable Runs Inside Mast to Protect from Weather & Tampering

Solar Surveillance Skid

For Cameras, Communications, and Lighting



Flexible Recharge Options

Charge with Remote Solar Power or with Auxillary Shore Power (110VAC)

Manual Crank Winch

Ultra-Reliable, Simple Operation. Removable Handle and Lockable Safety Pin Prevent Tampering with the Mast

Powder Coat Finish

Durable and Corrosion Resistant Steel Components with an Attractive White and Grey Finish

Weatherproof Enclosure

Lockable Steel Enclosure Houses Batteries, Charging Equipment, with Additional Storage Space

Versatile Installation

Ground Mount Tabs Facilitate Permanent Installations or Mounting to Type Utility Trailers

Key Features

- 24/7/365 Autonomous Operation
- Up to 2 Weeks of Battery Backup
- Tamper-Resistant Steel Construction
- 110V Power Input (Industrial Charger)

Full-Featured Integrator Package

\$7352

Package Includes:

- Solar-Skid with 300W Solar
- 2 x 100Ah SLA Batteries
- 21' Telescopic Mast
- Top of Pole Enclosure with:
 - 4-Port PoE Switch
 - 24v DC Output

Vorp Energy

📍 4774 South Hwy 191
 Rexburg, ID 83440
 📞 Phone : + (208) 904-0424
 ✉️ E-Mail : sales@vorpenergy.com

PROUDLY



MADE IN THE USA

This information subject to change without notice.

Solar Skid Specs	MSK-TP21-UPS	MSK-TP21-300W	MSK-TP21-600W	MSK-TP21-900W
Enclosure Size (H x W x D)	37" x 26" x 22.5"			
Travel Footprint (L x W)	40" x 40"			
Deployed Footprint (L x W)	40" x 40"	59" x 40"	59" x 81"	59" x 121"
Build Material	Powder-Coated Steel			
Total Weight (with 2 x 250Ah Batteries)	800lbs	850lbs	960lbs	1,020lbs
Mast Height (Extended)	21 Feet			
Mast Height (Collapsed)	6.8 Feet			
Max Mast Payload	65lbs			
Number of Mast Sections	3 Stabilized Steel Sections			
Solar Array Size	N/A	1 x 300W	2 x 300W	3 x 300W
Solar Charge Technology	N/A	Advanced MPPT		
Continuous Power Available (In Solar Zone 3)	Varies by Application	27 Watts	54 Watts	81 Watts
AC Power Input	110VAC or 220VAC Selected by Switch			
Operating Temperature	-22° to 140° F (-30° to 60° C)			
Axle Weight Rating (Trailer Only)	2000lbs			
Trailer Footprint (L x W)	83"x68.5"			

Need a towable solution? The Solar-Skid Trailer Conversion Kit bolts together in under an hour!






Kit Includes:

- Trailer Half Axle Kit
- Wheels & Fenders
- Jack-Stands and Mount
- 2" Ball Trailer Hitch
- Trailer Light Set

Upgrade to a Trailer Kit for Only

\$1495

Vorp Energy

 4774 South Hwy 191
 Rexburg, ID 83440
 Phone : + (208) 904-0424
 E-Mail : sales@vorpenergy.com