

21' (Extended)

6.8' (Nested)

Quick Detach Head End

Power Up to 4 Cameras and a Communications Device

High Wind Stability

Quick Deploy Guy Lines Stabilize Mast for Camera Applications in Any Conditions

3-Section Telescoping Mast

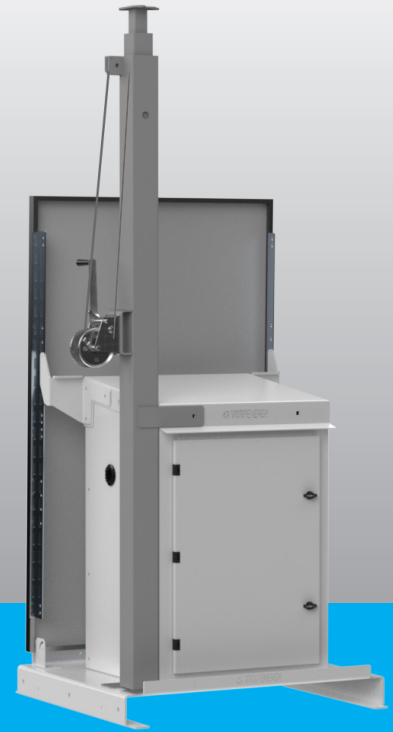
Heavy-Duty Steel Mast Sections Built for Years of Rugged Deployment

Power Cable Protection

Cable Runs Inside Mast to Protect from Weather & Tampering

Solar Surveillance Skid

For Cameras, Communications, and Lighting



Flexible Recharge Options

Charge with Remote Solar Power or with Auxillary Shore Power (110VAC)

Manual Crank Winch

Ultra-Reliable, Simple Operation. Removable Handle and Lockable Safety Pin Prevent Tampering with the Mast

Industrial Epoxy Primer and Polyurethane Topcoat

Durable and Corrosion Resistant Steel Components with an Attractive White and Grey Finish

Weatherproof Enclosure

Lockable Steel Enclosure Houses Batteries, Charging Equipment, with Additional Storage Space

Versatile Installation

Ground Mount Tabs Facilitate Permanent Installations or Mounting to Type Utility Trailers

Key Features

- 24/7/365 Autonomous Operation
- Up to 2 Weeks of Battery Backup
- Tamper-Resistant Steel Construction
- 110V Power Input (Industrial Charger)

Package Includes:

- Solar-Skid with 300W Solar
- 2 x 200Ah SLA Batteries
- 21' Telescopic Mast

Optional-

- Top of Pole Enclosure with:
 - 4-Port PoE Switch
 - 24v DC Output

Vorp Energy

- 📍 4774 South Hwy 191
Rexburg, ID 83440
- 📞 Phone : + (208) 904-0424
- ✉️ E-Mail : support@vorpenergy.com

PROUDLY



MADE IN THE USA

This information subject to change without notice.

Solar Skid Specs	MSK-TP21-UPS	MSK-TP21-300W	MSK-TP21-600W	MSK-TP21-900W
Enclosure Size (H x W x D)	37" x 26" x 22.5"			
Travel Footprint (L x W)	40" x 40"			
Deployed Footprint (L x W)	40" x 40"	59" x 40"	59" x 81"	59" x 121"
Build Material	Painted Steel with 2 coats of Industrial Epoxy Primer and Polyurethane Topcoat (optional) Polyurea (Rhino Lined) Base			
Total Weight (with 2 x 200Ah Batteries)	800lbs	850lbs	960lbs	1,020lbs
Mast Height (Extended)	21 Feet			
Mast Height (Collapsed)	6.8 Feet			
Max Mast Payload	65lbs			
Number of Mast Sections	3 Stabilized Steel Sections			
Solar Array Size	N/A	1 x 300W	2 x 300W	3 x 300W
Solar Charge Technology	N/A	Advanced MPPT		
Continuous Power Available (In Solar Zone 3)	Varies by Application	27 Watts	54 Watts	81 Watts
AC Power Input	110VAC or 220VAC Selected by Switch			
Operating Temperature	-22° to 140° F (-30° to 60° C)			



Need a towable solution? The Medium Duty Trailer is here.

The Medium Duty Trailer is the perfect companion to the Mirco-skid! Built to be deployed rapidly and withstand punishing circumstances it is the **Ultimate Mobile Surveillance Unit**. Easily load connect the trailer to a pick up and secure any location no matter how remote. Lock down any jobsite by deploying the Medium Duty Trailer system adding support to a central Surveillance Skid.

Vorp Energy

📍 4774 South Hwy 191
Rexburg, ID 83440
📞 Phone : + (208) 904-0424
✉️ E-Mail : support@vorpenergy.com